

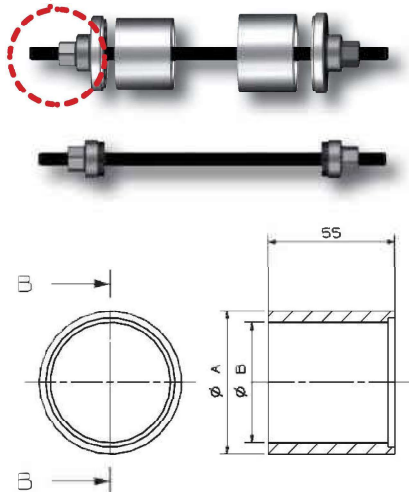
Extractor de Silent-Blocks

Silent-Blocks and bushes tools

Serie 5193N



**Rodamiento protegido
contra la suciedad**
Bearing protected



Extractor de Silent-Blocks

Silent -Block and bushes tools

Ref.	€/u.	Contiene / Contains	
5193N	595,60	4 Husillos con tuercas y rodamientos: M10, M12, M14 y M16 y 8 Tapas múltiples 20 Tubos para montar y desmontar Ø34 a Ø72 4 Spindles; M10, M12, M14 and M16 8 Cups 20 Shells internal Ø34 to Ø72	13,5

Ref.	€/u.	Descripción / Description	Para tapa / For cup
519830	49,50		Husillo completo M10
519831	50,50		Husillo completo M12
519832	51,50		Husillo completo M14
519834	52,50		Husillo completo M16
519041	15,10		TAPA A Ø72
519042	15,10		TAPA B Ø74
519043	15,10		TAPA C Ø76
519044	15,10		TAPA D Ø78
519045	15,10		TAPA E Ø80
519046	15,10		TAPA F Ø82
519047	15,10		TAPA G Ø70
519048	15,10		TAPA H Ø67,6
5190034	9,60		Ø Ext 44 Ø Int 34 AC
5190036	9,60		Ø Ext 46 Ø Int 36 BD
5190038	9,60		Ø Ext 48 Ø Int 38 CE
5190040	12,60		Ø Ext 50 Ø Int 40 DF
5190042	12,60		Ø Ext 52 Ø Int 42 EH
5190044	12,60		Ø Ext 54 Ø Int 44 FG
5190046	12,60		Ø Ext 56 Ø Int 46 AH
5190048	12,60		Ø Ext 58 Ø Int 48 BG
5190050	12,60		Ø Ext 60 Ø Int 50 AC
5190052	13,10		Ø Ext 62 Ø Int 52 BD
5190054	13,10		Ø Ext 64 Ø Int 54 CE
5190056	13,10		Ø Ext 66 Ø Int 56 DF
5190058	14,10		Ø Ext 68 Ø Int 58 EH
5190060	14,10		Ø Ext 70 Ø Int 60 FG
5190062	14,10	Ø Ext 72 Ø Int 62 AH	
5190064	14,60	Ø Ext 74 Ø Int 64 BG	
5190066	14,60	Ø Ext 76 Ø Int 66 AC	
5190068	14,60	Ø Ext 78 Ø Int 68 BD	
5190070	15,10	Ø Ext 80 Ø Int 70 CE	
5190072	15,10	Ø Ext 82 Ø Int 72 DF	

Puente mecánico
Para extractor de Silent-Blocks

Manual push puller
Bushes tools

Ref.	€/u.	
5192	365,40	6,9

