

# Push puller

Serie 1100

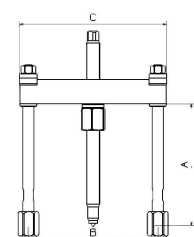
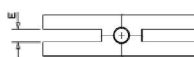
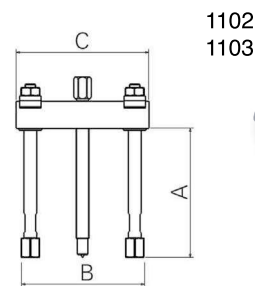
Push puller

Dá se kombinovat se sérií 1200 ( viz. sady ),  
1500 a sérií 4000 ( vnitřní stahovák )

Závítové tělo							
Ref.	A	B máx	B mín	C	E		
1102	120	110	46	122	10,1	1,0	
1103	120	140	46	156	10,1	1,1	

Nezávítované tělo							
Ref.	A	B máx	B mín	C	E		
1110	190	195	62	210	14,1	3,4	
1120	255	325	105	346	20,5	9,5	
1128	255	445	173	475	20,5	12,0	
1135	480	450	178	480	27,0	35,0	
1150	680	580	219	617	32,5	53,0	

Viz. rozšíření a spojovací matice str.19.  
Vyměnitelné čelisti se serie 1000.

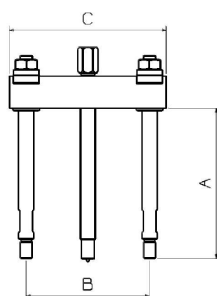
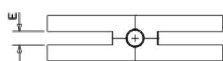


1102  
1103



## Serie 1100S

Push puller

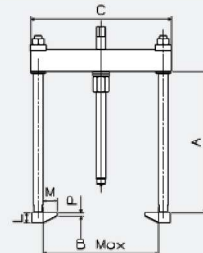
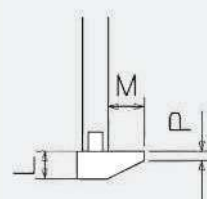


Tělo se závitem. Kompaktilní se sérií 1200.  
Vyměnitelné čelisti se sérií 1000.

Ref.	A	B máx	B mín	C	E		
1102S	115	110	46	122	10,1	1,0	
1103S	115	140	46	156	10,1	1,0	
1110S	175	195	62	210	14,1	3,0	
1115S	175	245	70	260	14,1	3,5	
1120S	245	325	105	346	20,5	9,5	
1128S	245	445	173	475	20,5	12,0	



## Deskové čelisti



Ref.	€/u.	L	M	P	B máx	
112005 112006		12 15	7 12	6	1110	195
					1110S	195
					1115S	245
					1120	325
					1128	445
113505 115005		35 45	52 62	10 15	1120S	325
					1128S	445
					1135	450
1150	580	1,9				