



Photo: WILD Coast/COSTASALVAJE



BRUTE BOOM

HEAVY DUTY CONTAINMENT BOOM

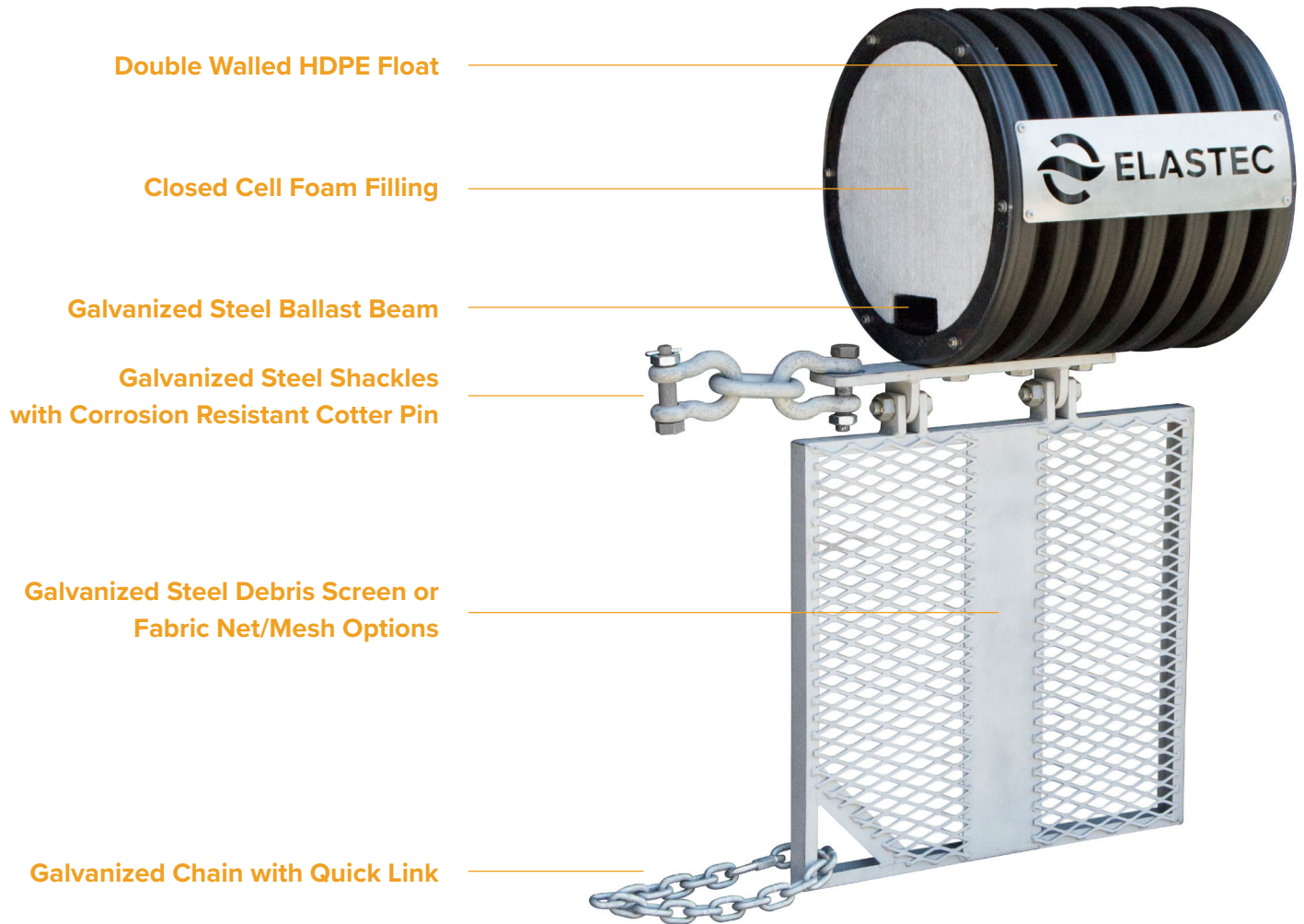
The ELASTEC BruteBoom is a heavy duty floating barrier to contain surface and submerged trash, natural debris and large floating objects in rivers, reservoirs, oceans and lakes. BruteBoom's larger diameter float designs (18 inch / 0.4 m and 24 inch / 0.6 m) provide increased freeboard for optimal surface debris capture and visibility. The floats are coupled with two different connecting options that allow for increased working load limit (WLL) of 4.75 or 6.5 ton. The heavy duty boom has been tested to a breaking strength of 60,000 lb / 27,216 kg or 103,000 lb / 46,720 kg. The system is engineered to maintain reserve buoyancy, even while supporting the optional debris screens.



Oil Spill Equipment | Floating Barriers | Incinerators

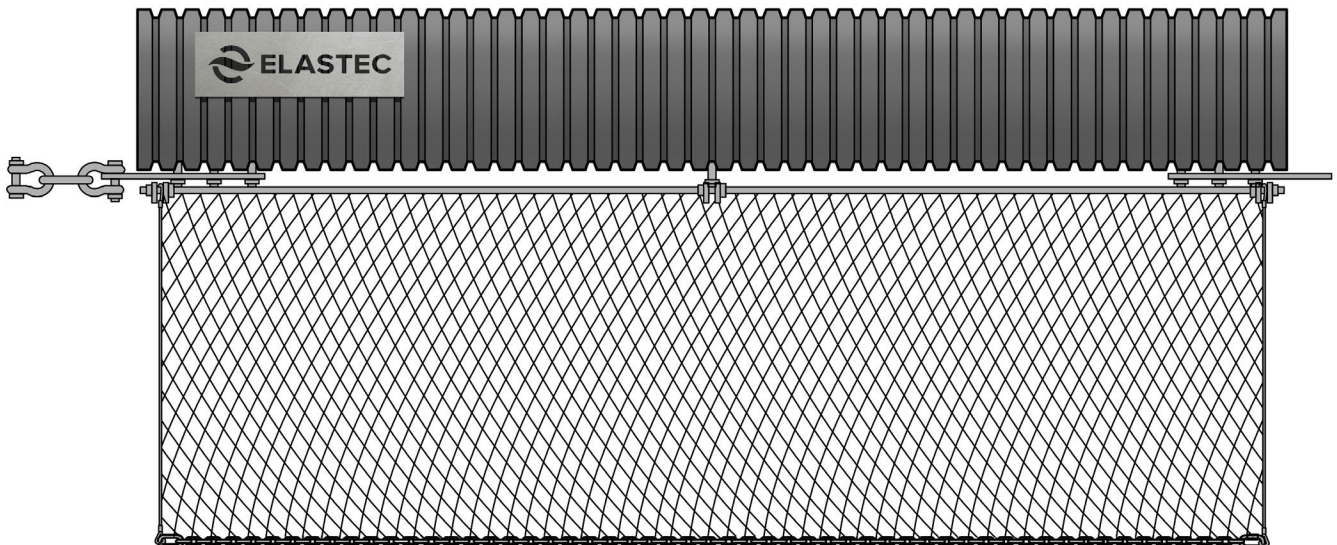
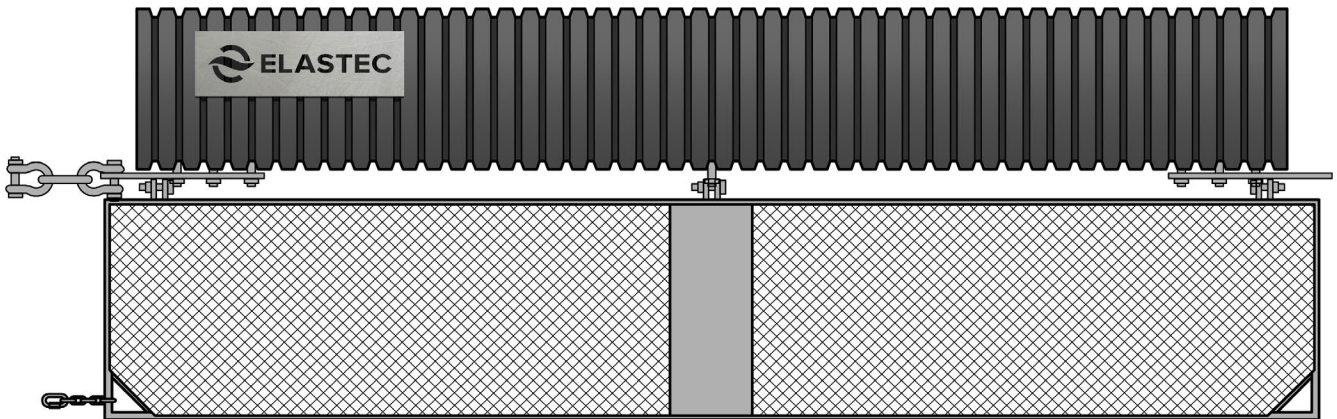
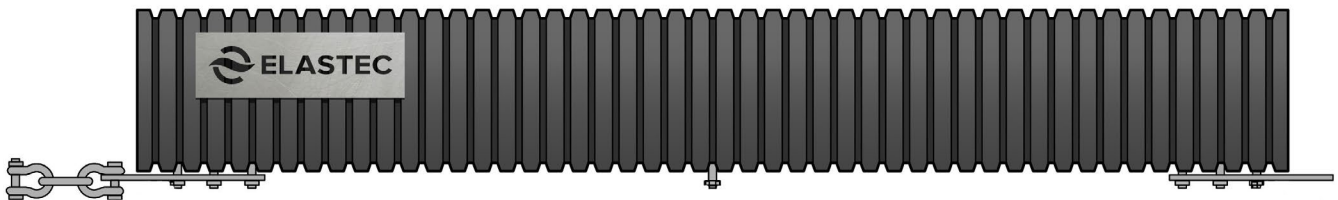
FLOTATION LOG

The flotation log is a corrugated, high density, double-walled, UV resistant HDPE. The galvanized steel ballast beam intensifies horizontal and vertical strength for increased debris and water current loads. Closed cell expanded polystyrene foam filling maintains buoyancy even if HDPE outer shell is compromised.



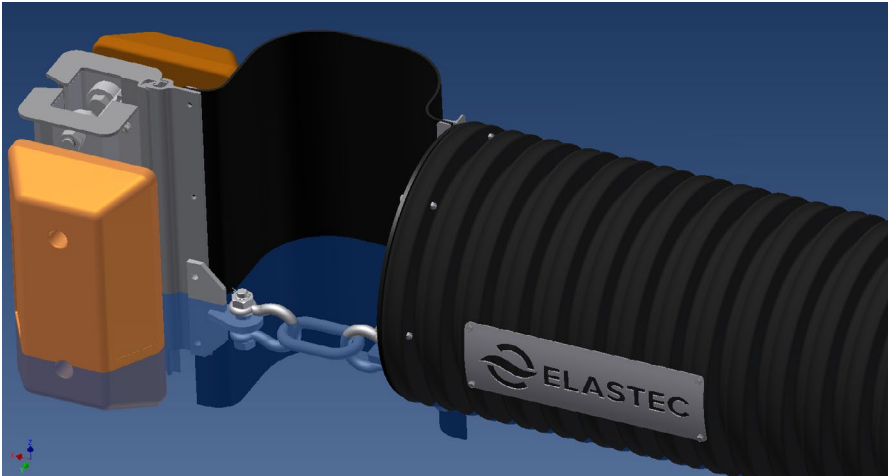
FLOTATION LOG SECTION AND DEBRIS SCREEN SIZES

BruteBoom logs are available in 10 ft / 3m and 20 ft / 6m lengths and in 18 inch (16 inch sustainable freeboard) and 24 inch (22 inch sustainable free board) diameters. The cost per foot decreases significantly for 20 ft logs providing a more economical and efficient system. Galvanized and Stainless steel mesh panels, fabric net/mesh and custom-designed debris screens are also available in 10 ft and 20 ft lengths. Screen depth sizes can be customized based upon project requirements.



LOG CONNECTORS

Composed of galvanized or Stainless steel and designed for marine environments, the BruteBoom connector shackles have a 4.75 / 6.5 ton working load limit (WLL) and are built to withstand heavy debris loads and continuous current velocities. The shackle bolt and nut are secured by a corrosion resistant Stainless steel cotter pin.



TIDAL COMPENSATOR

A Tidal Compensator is available for mooring short lengths of the Brute Boom (light load applications only). It allows the boom to rise and fall with varying water levels.

BRUTE BACKER

The Brute Backer is a shield made of heavy weight industrial belting to mitigate debris loss between float log joints. The Brute Backer's durable construction will provide years of reliable service while maintaining flexure.



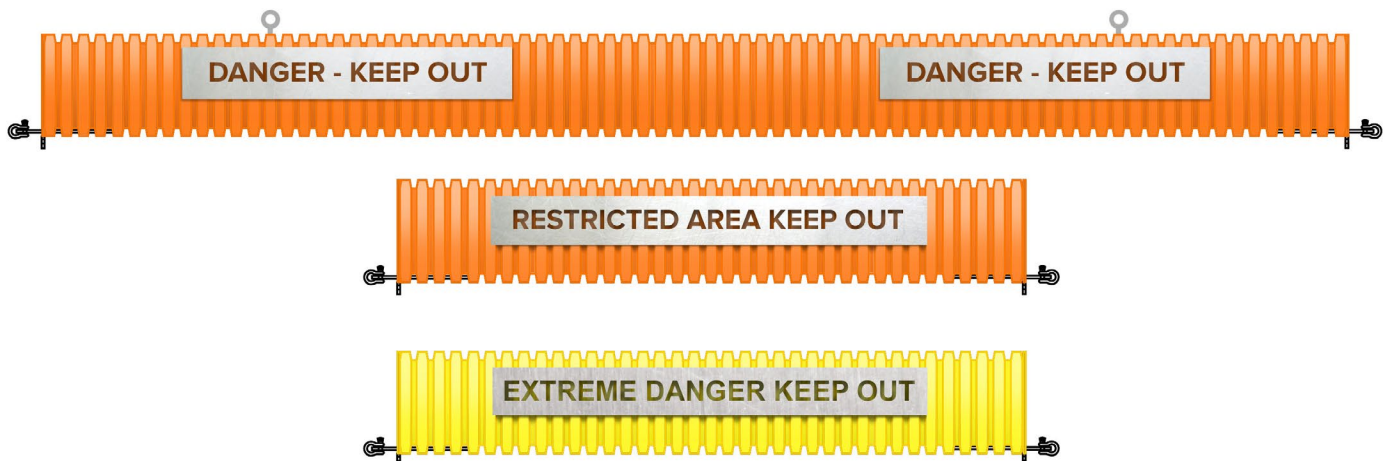
COLORS

The corrugated HDPE barrier standard color is black providing 10+ years of UV protection. Orange and yellow colors are also available with minimum quantities with 8+ years of UV protection.



WARNING SIGNS

Durable aluminum signage with routed lettering provides high-contrast visibility for warning messages.



OVER 50 YEARS OF FLOATING BOOM AND BARRIER EXPERIENCE

In 1967, American Marine, a division of Elastec, was established to help control water pollution with oil containment boom, fire boom, debris booms, turbidity curtains and quick-connect systems. The connection system survives as one of two industry standards today.



BruteBoom Features

Corrugated Double Walled HDPE	60,000 lb / 27,216 kg or 103,000 lb / 46,720 kg Breaking Strength
Closed Cell Foam	High Load Bearing Steel Beam
Heavy Duty Connectors	Durable Aluminum Signage

Options: Brute Backer, Debris Screens, Anchor Systems, Solar Lights, Mooring Buoys

Specification	10 ft BruteBoom		20 ft BruteBoom	
Flotation Log	High density, double-walled, UV resistant HDPE with internal closed cell foam			
Flotation Diameter	18 inch / 0.4 m and 24 inch / 0.6 m			
Ballast	Internal galvanized steel beam			
Colors	Black (other colors available with minimum order)			
Size	18 inch / 0.4 m	24 inch / 0.6 m	18 inch / 0.4 m	24 inch / 0.6 m
Weight	165 lb / 75 kg	183 lb / 83 kg	270 lb / 122 kg	365 lb / 165 kg
Weight with Screen	255 lb / 116 kg	238 lb / 108 kg	420 lb / 204 kg	475 lb / 215 kg
Length	136 inch / 3.45 m		234 inch / 5.94 m	
Buoyancy	897 lb / 409 kg	1,566 lb / 710 kg	1,655 lb / 755 kg	2,900 lb / 1,315 kg
Draft	2 inches / 5 cm			
Working Load Limit	4.75 / 6.5 ton			
Lifting Eyes	Two per 20 ft section			